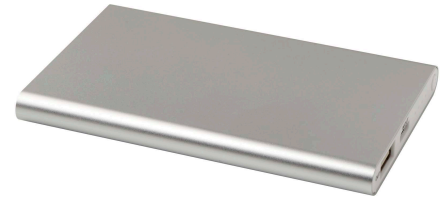


## Pep 4000 mAh Type-C recycled aluminium power bank





**SKU:** TP212438081

**Categorie:** Technology

Easily charge the power bank or your device via the Type-C in/output port and/or use the USB-A port to charge 2 devices simultaneously. The power bank is made of 25% RCS certified recycled aluminium, and features a 4000 mAh lithium polymer battery which delivers a total output power of max. 10W. Includes a TPE Type-C to USB-A charging cable.



General information	
<b>Imprint Method</b>	Laser engraving
<b>Imprint Location</b>	front
<b>Imprint Size</b>	95 x 50 mm
<b>Imprint Width</b>	95
<b>Imprint Height</b>	50
<b>Max Print Colors</b>	1
<b>Lead Time</b>	9
<b>Lead Time Max Qty</b>	500
<b>Decoration Mandatory</b>	No
<b>Packaging Indiv</b>	Yes
<b>Brand</b>	Unbranded
<b>Country Of Origin</b>	PRC
<b>PMS main colour</b>	Red
<b>Item Length CM</b>	11
<b>Item Width CM</b>	6,8
<b>Item Dimensions</b>	11 x 1 x 6,8 cm
<b>Item Weight Net Gr</b>	121
<b>Outer Carton Qty</b>	80
<b>Max Print Width Default MM</b>	95
<b>Max Print Height Default MM</b>	50
<b>Max Colors Default</b>	1
<b>Max Print Area Default</b>	front
<b>Print Technique Default</b>	Laser engraving
<b>Print Position Default</b>	front
<b>Packaging Indiv Type</b>	Indiv. gift box + polybag + manual
<b>Item Height CM</b>	1
<b>Gender</b>	None
<b>Item Box Length CM</b>	13,2
<b>Item Box Width CM</b>	8
<b>Item Box Height CM</b>	1,8
<b>Item Box Dimensions</b>	13,2 x 1,8 x 8 cm
<b>Capacity</b>	C

Variations		
Attribute	SKU	Stock
#E41F26 	TP212438021	5723
#2F4F8F 	TP212438053	6281
#c0c0c0 	TP212438081	7185
#6a696f 	TP212438082	8782